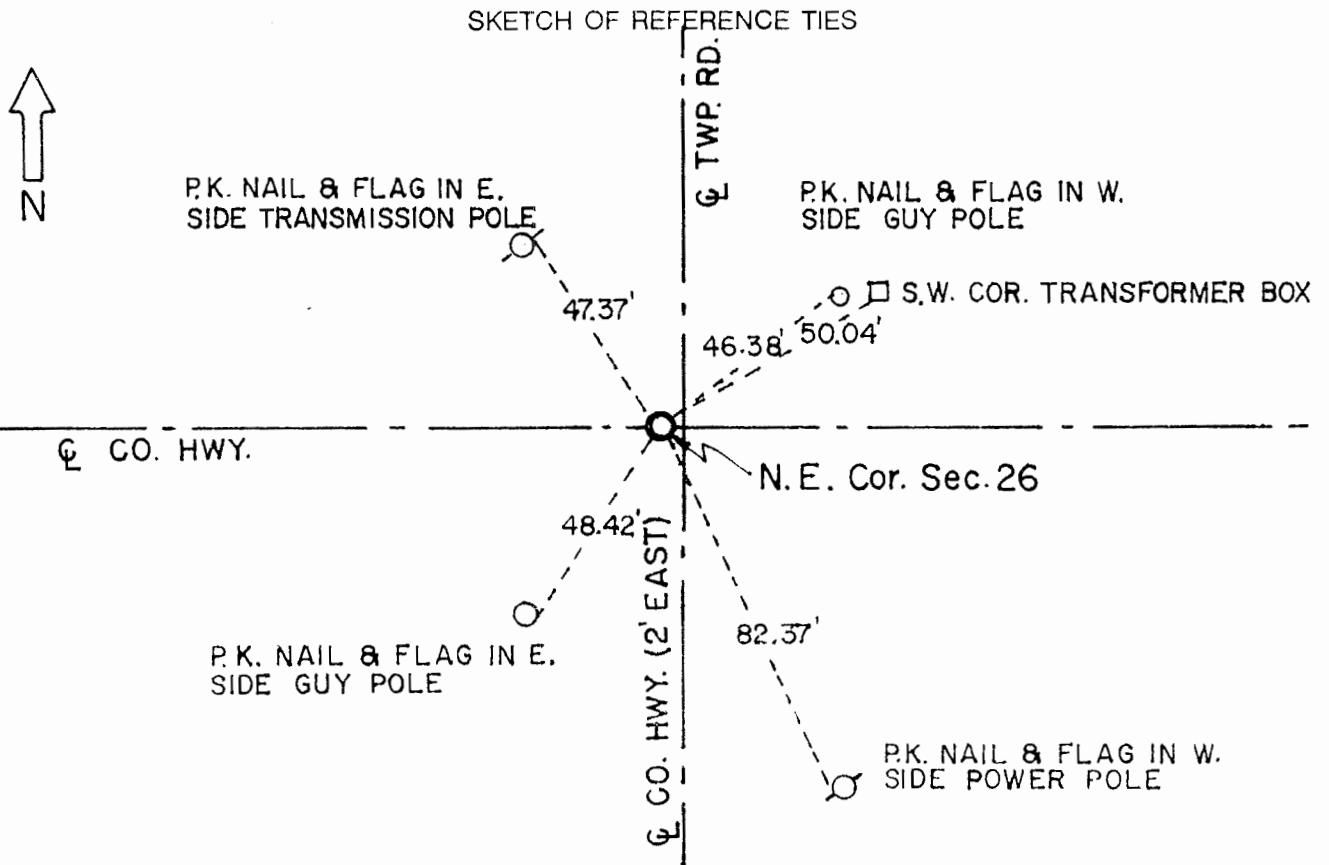


CERTIFICATE OF LOCATION OF GOVERNMENT CORNER

Northeast Corner of Section 26, Township 108, Range 41 5th P.M.

STATE OF MINNESOTA, County of Murray.

Statement: May 25, 1989 - Found a concrete monument with a cross on top and a granite stone with a wooden stake along side it.
May 26, 1989 - Placed a Minnesota Department of Transportation Cast Iron Monument at the road surface.



Statement of evidence relative to this corner location is on the back of page.

I hereby certify that this document and the data contained herein was prepared by me or under my direct supervision and that I am a duly Registered Land Surveyor under the laws of the State of Minnesota.

Duane A. Bonhema
Duane A. Bonhema

2-21-91
Date

Minnesota Registration No. 14895

OFFICE OF THE COUNTY RECORDER
COUNTY OF MURRAY
MAR 1 1 1991

I hereby certify that this document was filed in the County Recorder's office at ____ M. on the ____ day of _____ A.D., 19 ____

County Recorder *James V. Johnson*

By _____, Deputy
DOCUMENT NO. _____

Northeast Cor. Sec. 26 T108N-R41W

Statement:

- September 1861 Original Government Land Office Surveyor L. G. M. Fletcher records in his field notes, "Built mound with trench pits, charred stake per instructions."
- April 25, 1905 J. W. Woolstencroft, County Surveyor, records in the County Surveyor's Record Book, page 188, "Government Stake" while he was doing survey work in Section 26. He also shows that he measured to the Corner.
- Sept. 15, 1913 J. W. Woolstencroft, County Surveyor, records in the County Surveyor's Record Book, page 234, "Stone established by previous survey." He also shows that he measured to the Corner while he was doing survey work in Section 25.
- 1938 The Murray County Highway Engineer's Office shows in their records that they found a Concrete Monument at the Corner and established witness ties to the Corner.
- May 25, 1989 Duane A. Bonnema, LS Reg. No. 14895, found a concrete monument with a cross on top 1 1/2 feet below road surface. Below the concrete monument he found a 7 inch x 9 inch x 19 inch granite stone with a wooden stake alongside at a depth of 3 feet below the road surface. A Minnesota Department of Transportation Cast Iron Monument was placed at the road surface.